

POLY SOLAR PANEL

POLY-CRYSTALLINE PV MODULES FULL CELLS
MONO-FACIAL

72

FULL
CELLS



SAND
RESISTANT



LID
RESISTANT



AMMONIA
RESISTANT



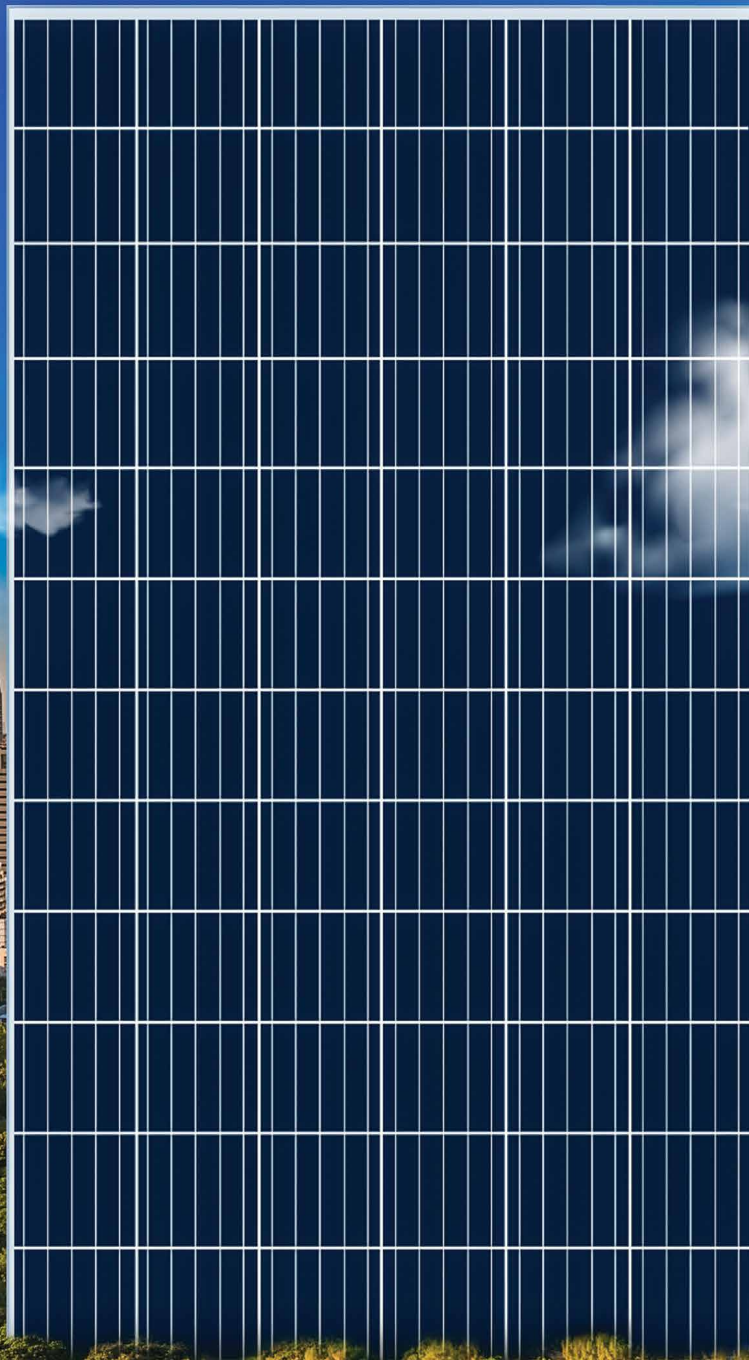
SALT CORROSION
RESISTANT



HIGHLY STABLE
AND TOUGH

25
years
Performance
Guarantee

5
years
Product
Warranty



NEW

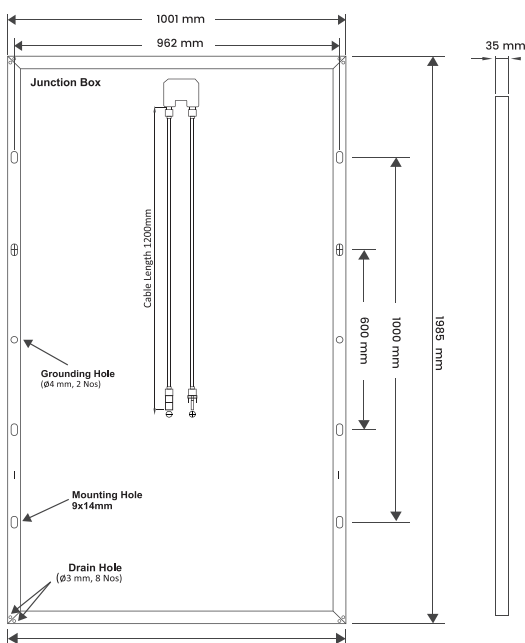
335 W

Electrical Parameter at Standard Test Condition (STC)

NO OF CELL	72
Maximum Power (Pmax) Wp	335
Maximum Power Voltage (Vmp) V	37.64
Maximum Power Current (Imp) A	8.91
Open Circuit Voltage (Voc) V	45.90
Short Circuit Current (Isc) A	9.43
Module Efficiency (>) %	16.85
Under Standard Test Condition (STC) of Irradiance of 1000 W/m ² , Spectrum Cell Temperature of 25°C	

ELECTRICAL PARAMETER AT NOCT	335
Maximum Power (Pmax) Wp	240.70
Maximum Power Voltage (Vmp) V	33.57
Maximum Power Current (Imp) A	7.17
Open Circuit Voltage (Voc) V	42.01
Short Circuit Current (Isc) A	7.59
NOCT Irradiance of 800 W/m ² , Ambient Temperature 20°C, Wind speed 1 m/Sec	

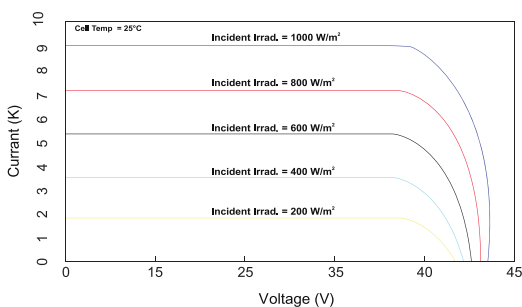
Dimension



MECHANICAL DATA

Cell Type	Poly-Crystalline
Cell Arrangement	72
Dimensions (L/W/H)	1985 mm /1001 mm/35 mm (40 mm in optional)
Weight	22 Kg
Superstrate (Glass)	3.2 mm High Transmission Low-iron Tempered
Frame Material	Anodized Aluminum Frame with Twin Wall Profile
Cell Encapsulant	PID free EVA (Ethylene Vinyl Acetate)-FC/UFC
Back Sheet	UV Protected tri Layer Reflective Back sheet
Junction Box	IP68 Rated
Cable	1200 mm/4 mm ²
Connector	2 nos Black MC4 Compatible Connector
By-pass Diode	3 PCS
Mechanical Load test	Snow load 5400 Pa, Wind load 2400 Pa
Application Class	Class A
Electrical Safety	Class II
Fire Safety	Class C (Type)

IV Curves



TEMPERATURE CO-EFFICIENTS AND OPERATING CONDITIONS

Nominal Operating Cell Temperature	45°C ± 2 °C
Temperature Coefficient of Pmpp	-0.4%/°C
Temperature Coefficient of Voc	-0.33%/°C
Temperature Coefficient of Isc	+0.03%/°C
Operating Temperature Range	-40°C To +85°C
Maximum System Voltage	1500 V(IEC & UL)
By-Pass Diode Rating	20 A
Maximum Series Fuse Rating	20 A
Design Load (Pa)	2400

