

SMALL SOLAR PANEL

MONO & POLY CRYSTALLINE PV MODULES FULL CELLS
MONO-FACIAL

36
FULL
CELLS


SAND
RESISTANT


LID
RESISTANT

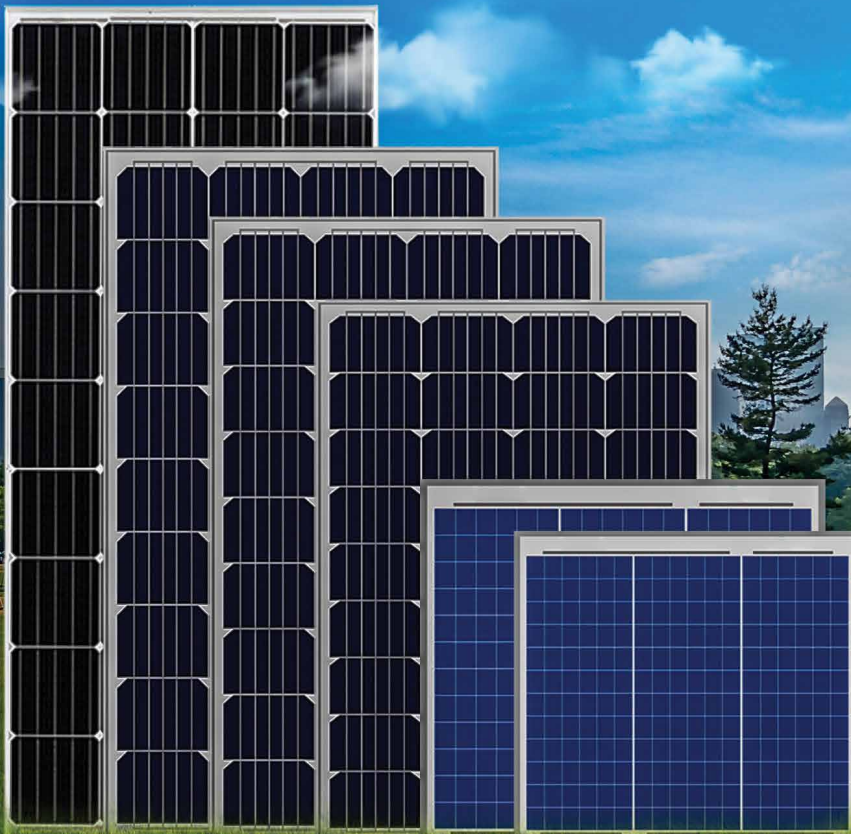
NH_3
S
AMMONIA
RESISTANT


SALT CORROSION
RESISTANT


HIGHLY STABLE
AND TOUGH

25
years
Performance
Guarantee

5
years
Product
Warranty



SMALL

125W-100W-75W-65W
50W-40W-20W-10W

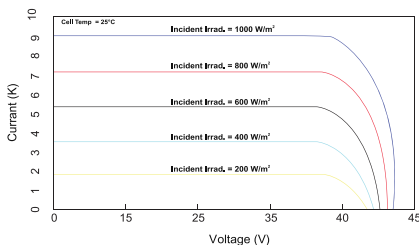
Electrical Parameter at Standard Test Condition (STC)

NO OF CELL	36	36	36	36	36	36	36	36
Maximum Power (Pmax) Wp	125	100	75	60	50	40	20	10
Maximum Power Voltage (Vmp) V	18.6	19.23	20	18	20	18.2	17.15	17.85
Maximum Power Current (Imp) A	6.45	5.21	3.75	3.33	2.51	2.2	1.18	0.62
Open Circuit Voltage (Voc) V	22.7	22.12	22.7	22.68	22.5	22.2	21.44	21.62
Short Circuit Current (Isc) A	6.84	5.50	4.40	3.88	2.65	3.37	1.27	0.69
Module Efficiency (>) %	18.80	18.80	18.80	18.80	18.80	18.80	12.25	9.24

Under Standard Test Condition (STC) of Irradiance of 1000 W/m², Spectrum Cell Temperature of 25°C

MECHANICAL DATA	125	100	75	60	50	40	20	10
Cell Type	Mono	Mono	Mono	Mono	Mono	Mono	Mono	Mono
Cell Arrangement	36(9x4)	36(9x4)	36(9x4)	36(9x4)	36(9x4)	36(9x4)	36(18x2)	36(9x4)
Dimensions (L/W/H)	1155x665x35	1010x665x35	775x665x30	605x665x30	515x665x30	430x665x30	440x355x17	300x355x17
Superstrate (Glass)	3.2 mm High Transmission Low-iron Tempered							
Frame Material	Anodized Aluminum Frame with Twin Wall Profile							
Cell Encapsulant	PID free EVA (Ethylene Vinyl Acetate)-FC/UFC							
Back Sheet	UV Protected tri Layer Reflective Back sheet							
Junction Box	IP 68 Rated							
Cable	300 mm/4 mm ²							
Connector	2 nos Black MC4 Compatible Connector							
By-pass Diode	2 PCS							
Mechanical Load test	Snow load 5400 Pa, Wind load 2400 Pa							
Application Class	Class A							
Electrical Safety	Class II							
Fire Safety	Class C (Type)							

IV Curves



TEMPERATURE CO-EFFICIENTS AND OPERATING CONDITIONS	
Nominal Operating Cell Temperature	45°C ± 2 °C
Temperature Coefficient of Pmpp	-0.4%/°C
Temperature Coefficient of Voc	-0.33%/°C
Temperature Coefficient of Isc	+0.03%/°C
Operating Temperature Range	-40°C To +85°C
Maximum System Voltage	120 V
By-Pass Diode Rating	5 A
Maximum Series Fuse Rating	5 A
Design Load (Pa)	2400